

Waiulu Villa 115C



Hualālai



Waiulu Villa 115C

Lower level three bedroom, three and one half bath corner villa set on a bluff overlooking wonderful views of the 5th hole of the Members only Ke'olu Golf Course. Large pocketing doors expand the great room onto a spacious covered lānai with barbecue area showcasing views of golf course, Punawai Lake and the Pacific Ocean. This villa is conveniently located within walking distance to the Members only Canoe Club, Uluweuwu Bay and just a short ride in a golf cart to the Ke'olu Clubhouse and amenities at the Four Seasons Resort.

Bedrooms - 3
Bathrooms - 3.5

Interior Living Area - 2,650
Lānai Area - 569
Note - Areas are in square feet and are approximate

Hualālai Realty

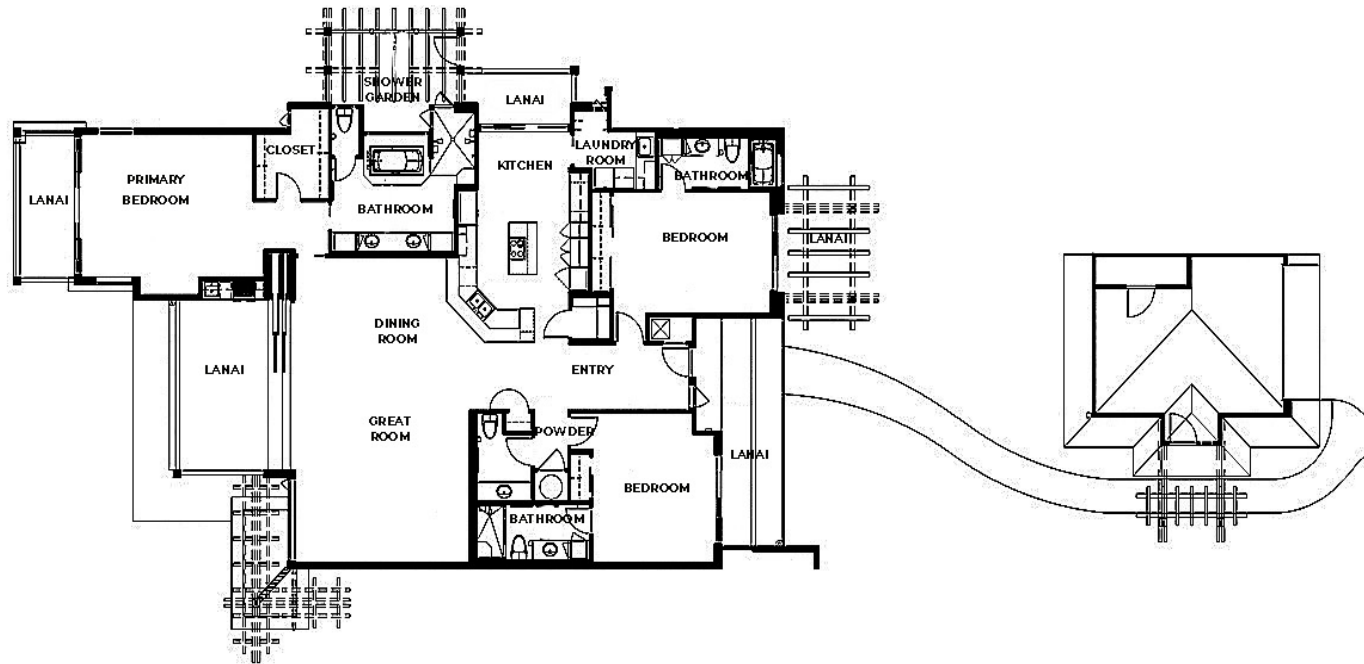
P.O. Box 819, Kailua-Kona, Hawai'i 96745 (800) 983-3880 or (808) 325-8500

www.hualalairealty.com



Certain information contained in this brochure has been provided by third-parties, and Hualālai Realty does not represent or warrant the accuracy of such Information. Hualālai Realty disclaims any responsibility or liability for any such consequence relating directly or indirectly to any action or inaction that a prospective buyer may take based on such information. It is recommended that prospective buyers independently verify all such information. Copyright 2023 Hualālai Realty.

Waiulu Villa 115C Floor Plan



Hualālai Realty

P.O. Box 819, Kailua-Kona, HI 96745 (800) 983-3880 or (808) 325-8500

www.hualalairealty.com



Certain information has been provided by third-parties, and Hualālai Realty does not represent or warrant the accuracy of such information. Hualālai Realty disclaims any responsibility or liability for any such consequence relating directly or indirectly to any action or inaction that a prospective buyer may take based on such information. It is recommended that prospective buyers independently verify all such information.
Copyright 2022 Hualālai Realty.